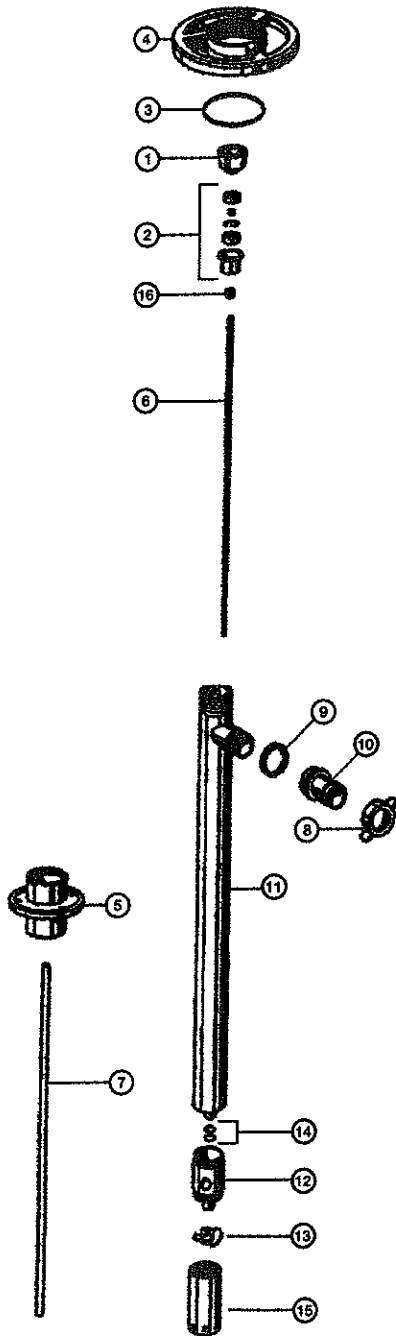


316 STAINLESS STEEL

Pump Tube Series Spare Parts



ITEM NUMBER	DESCRIPTION
1	Pump Coupling, Nylon
2	Bearing Unit Assembled – 2 each Viton shielded bearings, spacer, snap ring, bearing can
3	Snap Ring, Steel
4	Hand Wheel, Polypropylene
5	Connection Flange, SS316
6	Drive Shaft, SS316 27" (700 mm) 39" (1000 mm) 47" (1200 mm) 60" (1500 mm) 72" (1800 mm)
7	Guide Sleeve, PTFE 27" (700 mm) 39" (1000 mm) / 47" (1200 mm) 60" (1500 mm) 72" (1800 mm)
8	Wing Nut, SS316
9	Seal, PTFE -
10	Hose Barb, SS316 .75" (19 mm) 1" (25 mm)
11	Inner/Outer Tube Assembly, SS316 27" (700 mm) 39" (1000 mm) 47" (1200 mm) 60" (1500 mm) 72" (1800 mm)
12	Pump Housing with Carbon Bushing, SS316
13	High Volume Impeller, PTFE High Pressure Impeller, PTFE
14	O-Ring, Viton (2 per set)
15	High Volume Pump Foot, SS316 High Pressure Pump Foot, SS316
16	V-Seal, PTFE
17	Repair Kit (Includes Items 1, 2, 9, 12 & 13)

⚠ When pumping flammables or combustible liquids, this pump must be used in conjunction with an explosion proof motor.